

# SNAPE GARDENING CLUB - NEWS



ISSUE NO 22 | MARCH 2024 |

This month is the gateway to the rest of the gardening year, the clocks change at the end of the month and slowly but surely our days will be longer, our soils will warm and following the late Winter and early Spring stalwarts, our gardens will begin their annual performance! There are plenty of jobs to be getting on with, but keep one eye on the frost forecast before being lulled into unwrapping tender plants. Hopefully, with all the advice we give you, you'll be in a great place to get cracking, but worry not if you're a bit behind it'll all come out in the wash (as they say!).....This month we are telling you about some days out you could take, ideas for growing your own and the opportunity for taking cuttings to make the most of your favourite perennials for virtually no cost, plus wonderful reviews of members visits to other gardens!..... happy reading everyone x

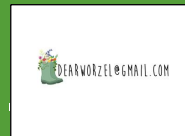
## WHAT'S INSIDE THIS MONTHS ISSUE.....

BASAL CUTTINGS

GARDEN REVIEWS

JOBS TO DO

PLUS SO MUCH MORE...



Send us a photo, recommend a place to visit or have a query we'll do our best to help.....

GIVE IT A TRY –

[dearworzel@gmail.com](mailto:dearworzel@gmail.com)

### GROWING YOUR OWN VEGETABLES.....

*It can be a daunting idea.....BUT.....you don't need to own a greenhouse or take on the responsibility of an allotment.....We are looking at the patio or a windowsill!!!!!! Give it a try.....who doesn't want the satisfying taste of home-grown?*

Buy a "patio" veg plant or seed

#### FOR THE PATIO.....

Tomato "Losetto" – long cropping, blight resistant, bitesize & sweet!



"Butterbush" Butternut Squash – compact, high yield, stores well & packed with vitamins!



Cucumber "Patio Snacker" – short vines, great flavour, non-bitter skin, high yields

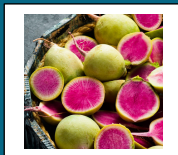


Pepper "Hamik" – almost seedless, thick skinned, juicy & sweet

#### FOR THE WINDOWSILL



Chillies "Prairie Fire" – small size, easy to pick, fiery hot!



Radish "Watermelon" – Mild peppery flavour, Crunchy.....BUT WHAT A STUNNER FOR THE SALAD BOWL!

Use a ready-mix cut&come again salad leaf to keep it easy.....sow every 2 weeks to have a Sumer full of salad leaves



Watering & Feeding are 100% your job – just like any other container

I am still going to get plants.





Do you know the answer?

- a) The tayberry is a cross between what?
  - b) Which manure has the highest nitrogen content.....horse, pigeon or chicken?
  - c) What causes you to cry when cutting an onion?
- (answers on the next page)

### GETTING AHEAD IN SOGGY TIMES!

*With the wet weather preventing getting outside, get yourself prepared for when the sun shines.....because it will!!*

Having breakfast with eggs?? Save the shells, rinse & dry.....crush in the food processor.....beat the Spring slug onslaught!



Get your tools in "TIP-TOP" shape by cleaning, disinfecting, sharpening and oiling with boiled linseed oil.

In a dry spell.....get your plant supports in the ground before the lush growth begins.....they will be much less obvious!

Harrogate Flower Show  
25<sup>th</sup> - 28<sup>th</sup> April  
Great Yorkshire Showground  
£22 per adult  
children under 16's free & concessions available

GRAND FLORAL HALL

LIVE THEATRE WITH SPEAKERS

FOOD & DRINK

JAZZ PIANO & BRASS BANDS  
A DAY OF INSPIRATION!

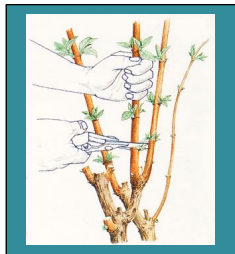
## MARCH JOBS.....

Prune roses and give them a feed.

Plant onion & shallot sets.

Deadhead the daffodils to prevent them from setting seed.....don't tie the stems up, allow them to die back naturally & return the nutrients to the bulb for next year.

Prune Summer flowering deciduous shrubs that flower on this year's growth e.g. buddleia & lavatera - leave 2-3 sets of buds.



Prune gooseberries, red & white currants.

Prune late Summer flowering clematis.



These are "group 3" clematis that flower on this year's growth.

Houseplant care - dust off the leaves to allow for the best photosynthesis. Water lightly and check for pests as they all come closer to the growing season.

Plant lilies & Summer flowering bulbs in pots and borders.

Cutback deciduous grasses.

Feed and mulch the base after pruning.

Clump forming grasses need a "comb" through to remove dead strands.



Clump forming - remove old flower stems & comb out the dead/brown stems.



Cutback cornus shrubs to around 15cms (6") this maximises the quality of the coloured stems next Winter.



Sow parsnips towards the end of the month as the soil will be warmer and they require a long growing season.

Whip out the weeds as they appear.....reduce the workload for later in the year!

# BASAL CUTTINGS

There always seems to be a point in the growing cycle to take a cutting. At this stage of the year with the early growth, it's time to take advantage of the first showings and take "BASAL CUTTINGS".

**WHAT** - This method is a great choice for plants whose stems "hollow out" as they mature. The empty stems make other "cutting" methods a bit trickier!

## YOU WILL NEED

- \*sharp knife
- \*pot filled with  $\frac{1}{2}$  compost/  $\frac{1}{2}$  grit
- \*dibber
- \*polythene bag
- \*elastic band
- \*sharp grit

**WHY** - As with all types of cuttings, it is a great way of gaining more of your favourite plants, for a minimal cost and a minimal effort!

**GIVE IT A GO** - with lupins, delphiniums, phlox, chrysanthemums, achillea & campanula for example!

## HOW TO DO IT

THE PRINCIPAL IS THE SAME AS OTHER CUTTING METHODS, IT'S JUST ABOUT WHERE YOU MAKE THE CUT!

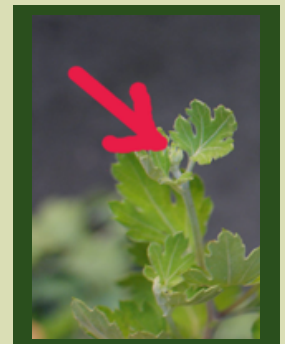
1. When the basal shoot is about 10cms (4") long.
2. Remove the shoot from the very base of the plant.
3. If there is enough growth, take 3 - 4 cuttings.
4. Neaten the cutting under a node & remove any leaves that will be under the compost. (any roots can remain)
5. Pinch out the growing tip at the top.
6. Using the dibber make holes in the compost around the edge of the pot & sink the cutting 2.5cms (1") deep.
7. Water well & sprinkle grit on the surface to reduce rot risk.
8. Place a plastic bag over the top of the pot, secure with an elastic band, ensuring the bag is not touching the cuttings.
9. Keep the compost damp & mist the leaves.
10. Place on a warm shady windowsill. Pot on individually when roots appear.



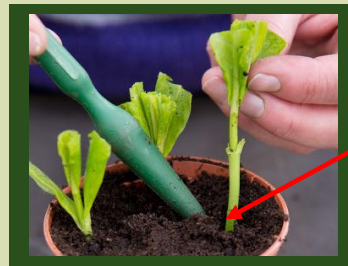
Sharp knife & make the cut as low to the ground as possible.



Trim by node & pinch the tip out



Dib the compost to ensure no damage to the cutting



Mini-greenhouse



LOTS OF NEW PLANTS!!!!

Do you know the answer? a) Blackberry & Red Raspberry b) Pigeon at 5% (too strong for general gardening - only really used with the growing of comfrey!) c) A vaporised chemical reaction with sulphur & amino acids!

We are lucky enough to have 2 visitor reviews this month.....We're off to the North East here at home and further afield to the Southern Coast of Spain in Andalucía.....*thank you members for your words & pics x*

**TUDOR CROFT GARDENS IN GUISBOROUGH** has been owned by the Heaghley family since the 1950's and this arts & crafts house has 5 acres of garden to explore! The last 70 years have seen the garden restored and it's open 3 times a year.....so keep a note in the diary for February's snowdrop display, May to see the rhododendrons and June for the roses.

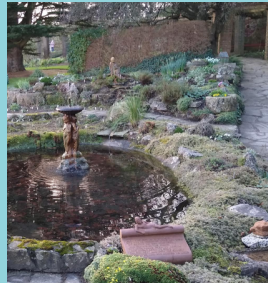


*Spot those juicy buds.....thankful for our wet Winter!*



Originally built by the brick manufacturer Ron Crossley in 1934 he used his company's special hand-made sand-faced "Tudor" bricks.....hence the name!

Many of the "Crossley" bricks are evident throughout the garden - notably the long rise colonnade with its 48 columns - covered in roses during the Summer months.....*this place is a real treat!*



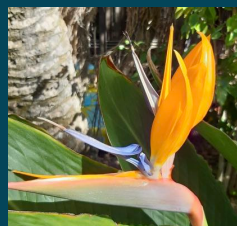
**AND NOW WE'RE OFF TO THE "PALMERAL OF ELCHE"**.....found in Southern Alicante & a UNESCO site of outstanding universal value!

This landscape of date palm groves was erected at the end of the 10<sup>th</sup> century AD. It now consists of 67 orchards containing some 45,000 date palms.....covering 356 acres!

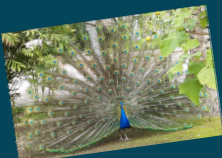
It utilises components of the North African landscape which was introduced to Europe during the Islamic occupation of the Iberian Peninsula.



*The Imperial Palm Tree is one of a kind! Named by Empress Elizabeth of Austria in 1894. It is a male date palm with several branches.*



Artificial irrigation in the form of a canal system & the double rows of planting remain evident, along with other regional planting schemes.



The dates are exported across Spain as food & the milky white palms are used for decoration & Palm Sunday processions.

